



# Port & Company® Youth Performance Fleece Pullover Hooded Sweatshirt. PC590YH

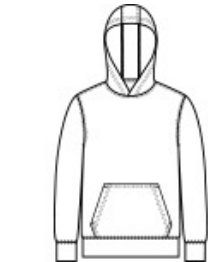


Stay active in performance sweatshirts powered by Dry Zone® moisture-wicking technology.

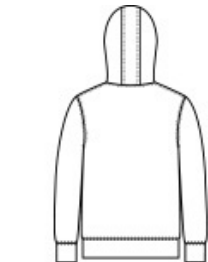
- 5.9-ounce, 100% polyester
- Removable tag for comfort and relabeling
- Taped neck
- 3-panel hood
- No draw cords at hood
- Locker patch
- Front pouch pocket
- Self-fabric cuffs and hem

### CARE INSTRUCTIONS

Machine wash cold, inside out with like colors, only non-chlorine bleach when needed. Tumble dry low. Do not iron. Do not use fabric softener.



front



back

### HOW TO MEASURE



**CHEST WIDTH**  
Measure under the arm and around the fullest part of the chest with arms down, keeping tape horizontal.

### SIZE CHART

	XS	S	M	L	XL
Size	4	6/8	10/12	14/16	18/20
Chest	25-26	26-28	28-30	30-32	32-35

### COLOR INFORMATION

Please note: PMS code information is shown only when an exact match is available.



Charcoal  
PMS 4294C



Deep Navy  
PMS 532C



Jet Black  
PMS BLACK C



Red  
PMS 200C



Royal  
PMS 2133C



Silver  
PMS 435C